



BADGE® BADGE® CONTROL

design **Simone Micheli**

3D
TRADEMARK

5 YEARS WARRANTY

MATERIAL:

Super slim heating body in painted carbon steel.

FIXING KIT:

Brackets, airvent, hexagonal tool, plugs and screws for mounting suitable for use on compact or hollow brick, installation notice.

The fixing kit is compliant with VDI 6036 norm, class 4.

VALVE KIT INCLUDES:

Valves (STANDARD VERSION)

Valves with thermostatic head (CONTROL VERSION)

Fittings for copper pipe (Ø 12/14/15)

Fittings for multilayer pipe (Ø 16 x2)

PACKAGING:

The radiator is protected by a film in polyethylene and with a carton box. Use and maintenance notice included.

PAINTING PROCESS:

Painted with ecological epoxy. (Certificate DIN 55900-1,-2).

Thermal outputs certified in accredited laboratories in compliance with European norm EN442.

COLOURS:

Radiators and accessories: standard white R01 colour.

For other colours see colour chart.

PRODUCT CERTIFICATES



P. max: 5 bar

T. max: 110° C

Available for central heating systems

Connections: n° 2 x G 1/2" - n° 1 x G 1/2"

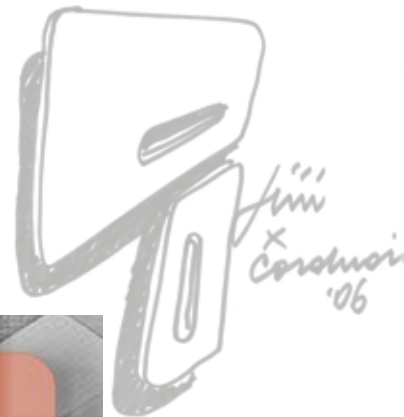
AWARD

DESIGN PLUS
WINNER

COMFORT & DESIGN
AWARD

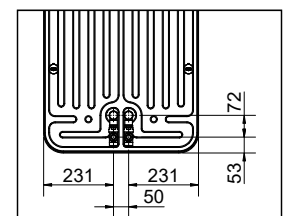
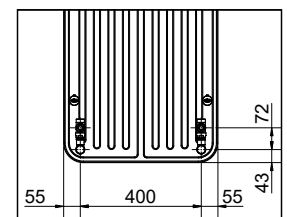
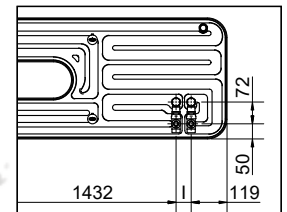
ŁAZIENKA
AWARD

PRIX DU DESIGN IDÉO BAIN
NOMINÉ



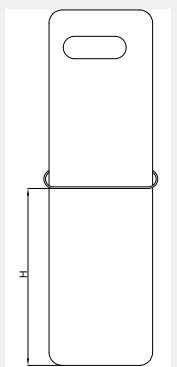
STANDARD version

CONNECTION detail

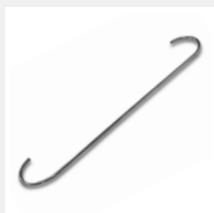


HOW TO PLACE
TOWEL BAR
BADGE VERTICAL
(ACCESSORIES)

Model	H
	[mm]
1212x512	800
1755x512	870



ACCESSORIES

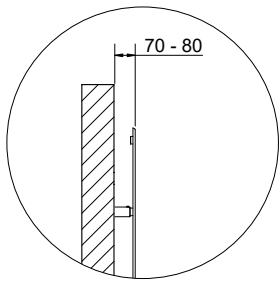


Towel bar in polished stainless steel (L= 570 mm)

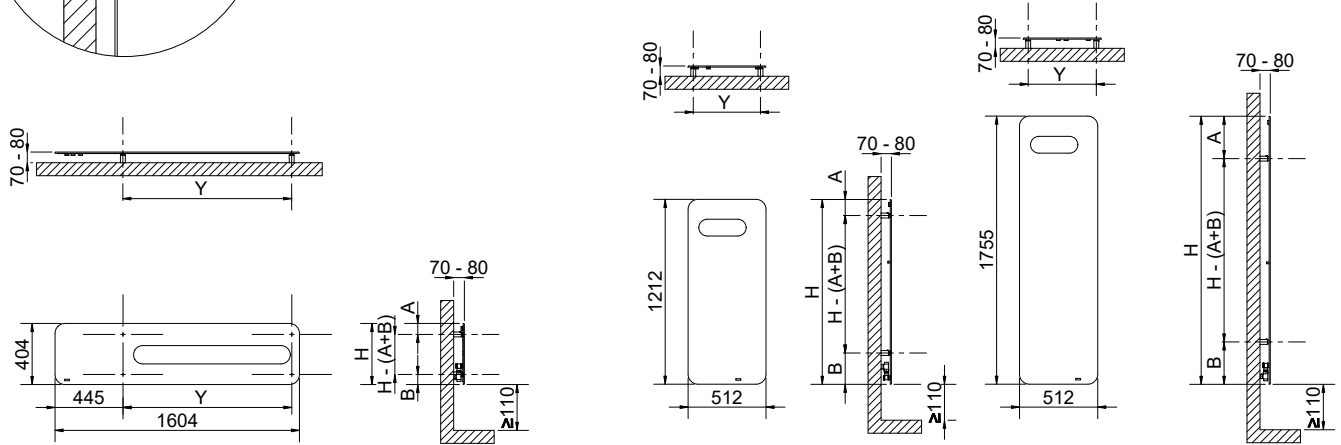
Art. Nr. 5991990310240



Available on vertical BADGE®



H [mm]	A [mm]	B [mm]	l (*) [mm]
404	72	66	1105
1212	105	205	440
1755	278	278	446

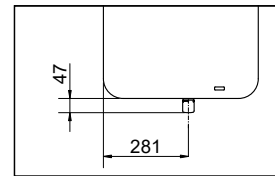
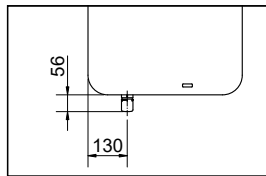
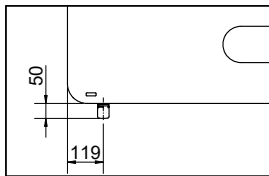


BADGE®

Art. Nr.	Height	Width	Pipe Centres	Dry Weight	Surface	Water Content	Thermal output Watt		Exponent n
	H [mm]	L [mm]	l [mm]	[Kg]	[m ²]	[lt]	Δt = 50°C	Δt = 30°C	
3540806100021	404	1604	50	19	0,96	1,1	572	306	1,2224
3540806100025	1212	512	400	20	1,12	0,8	567	301	1,2398
3540806100030	1755	512	50	28,5	1,66	1,2	795	436	1,1749

Art. Nr. are referred to WHITE R01 colour version.
The art. nr. is inclusive of **VALVE AND HOLDER**.

CONTROL version



BADGE® CONTROL

Art. Nr.	Height	Width	Pipe Centres	Dry Weight	Surface	Water Content	Thermal output Watt		Exponent n
	H [mm]	L [mm]	l [mm]	[Kg]	[m ²]	[lt]	Δt = 50°C	Δt = 30°C	
3540806100041	404	1604	50	19	0,96	1,1	572	306	1,2224
3540806100051	1212	512	250	20	1,12	0,8	567	301	1,2398
3540806100050	1755	512	50	28,5	1,66	1,2	795	436	1,1749

Art. Nr. are referred to WHITE R01 colour version.

The art. nr. is inclusive of **VALVE, HOLDER AND THERMOSTATIC HEAD**, compliant with UNI EN215:2007 and DM 19/02/2017.

For output at different Δt than 50°C, please refer to the following formula = desired output = output at Δt 50°C x (desired Δt/50)ⁿ