



# FEDERICA

**EUROPEAN  
WARRANTY**

**NEW**

**MATERIAL:**

- Vertical collectors in painted mild steel  $\varnothing$  38 mm.
- Horizontal heating elements in painted mild steel  $\varnothing$  38 mm.

**FIXING KIT:**

Brackets, airvent, hexagonal tool, plugs and screws for mounting suitable for use on compact or hollow brick, user notice.

The kit is certified from TÜV in compliance with VDI 6036 - class 4.

**PACKAGING:**

The radiator is protected by recyclable carton box. User notice included.

**PAINTING PROCESS:**

Painted with ecological epoxy powders (Certificate DIN 55900-1,-2).

**COLOURS:**

See colour chart.

**ACCESSORIES:**

For the complete list, please refer to the accessories chapter.

AVAILABLE FUNCTIONS:

- Hot water
- Dual energy

P. Max: 8 bar

Functioning: hot water

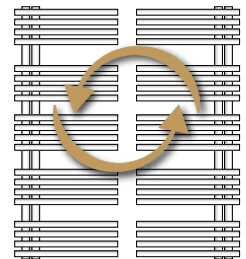
T. Max: 110° C

Connections: n° 2 x 1/2" G - 1 x 1/2" G

## CERTIFICATES



UPSIDE DOWN



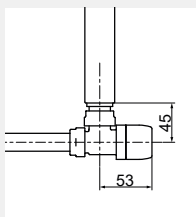
## ACCESSORIES

**Kristal valve square with thermostatic option white R01**



Copper conn.  $\varnothing$  12/14/15  
Art. nr. 5991990311161

Multilayer conn.  $\varnothing$  16  
Art. nr. 5991990311160



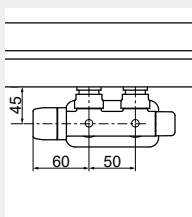
Quotes for square Kristal valves with thermostatic option



**Kristal valve square pipe centres 50 mm left white R01**

Copper conn.  $\varnothing$  12/14/15  
Art. nr. 5991990311188

Multilayer conn.  $\varnothing$  16  
Art. nr. 5991990311187



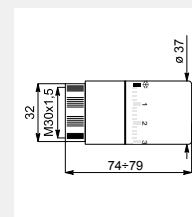
Quotes for square Kristal valves with thermostatic option

**Thermostatic head white**



(Kit 2 pieces)

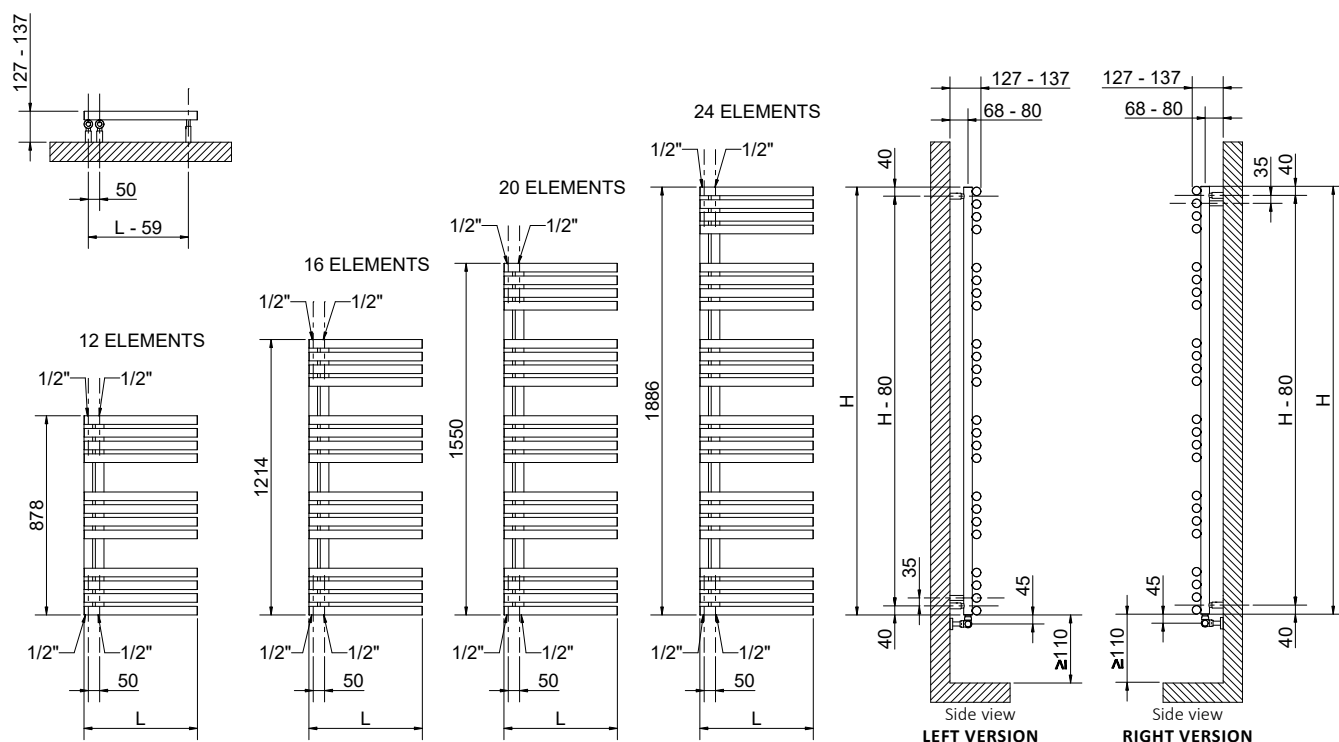
Art. nr. 5035270710016



Thermostatic head quotes

*If ordered separately from the radiator, the accessories are available in standard white only*

*Art. nr. are referred to colour WHITE R01*



Quotes for Kristal valves

## FEDERICA

Height [mm]	Width L [mm]	Pipe centres l [mm]	Art. nr.	Dry Weight [Kg]	Surface [m <sup>2</sup> ]	Water content [lt]	Thermal output [Watt]		Exp. n	Dual energy kit [Watt]
							Δt=50°C	Δt=30°C		
<b>878</b>	500	50	3551726100050	9,9	0,926	7,3	444	238	1,2198	400
	600	50	3551726100051	11,4	1,069	8,5	523	280	1,2204	500
<b>1214</b>	500	50	3551726100052	13,2	1,245	10,2	599	325	1,1963	600
	600	50	3551726100053	15	1,436	11,4	680	366	1,2137	700
<b>1550</b>	500	50	3551726100054	16,4	1,564	12,6	732	390	1,2344	700
	600	50	3551726100055	18,7	1,803	15	851	460	1,2040	700
<b>1886</b>	500	50	3551726100056	19,7	1,883	15,1	900	474	1,2551	900
	600	50	3551726100057	22,2	2,169	17,5	1041	557	1,2249	1000

Art. nr. are referred to colour WHITE R01

For output at different ΔT, please refer to the following formula: desired output = output at ΔT 50 x (desired Δt/50)<sup>n</sup>