



SANDY

POLISHED STAINLESS STEEL

WARRANTY
10 YEARS

MATERIAL:

- Vertical collectors in polished stainless steel \varnothing 38 mm.
- Horizontal elements in polished stainless steel \varnothing 25 mm.

FIXING KIT:

Brackets, airvent, hexagonal tool, plugs and screws for mounting suitable for use on compact or hollow brick, user notice.

The kit is certified from TÜV in compliance with VDI 6036 - class 4.

PACKAGING:

Carton angular and profiles protected by a recyclable film in polyethylene. User notice included.

FEATURES:

It is totally made in stainless steel with an unalterable finishing guaranteed during the years.

ACCESSORIES:

For the complete list, please refer to the accessories chapter.

AVAILABLE FUNCTIONS:

- Hot water
- Electric
- Dual energy

P. Max: 8 bar

Functioning: hot water

T. Max: 110° C

Connections: n° 2 x 1/2" G - 1 x 1/2" G

CERTIFICATES



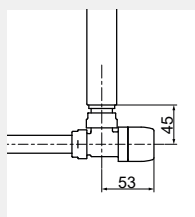
ACCESSORIES



Kristal valve square with thermostatic option chromed

Copper conn. \varnothing 12/14/15
Art. nr. 5991990311165

Multilayer conn. \varnothing 16
Art. nr. 5991990311166



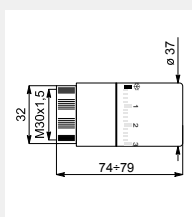
Quotes for square Kristal valves with thermostatic option



Thermostatic head chromed

(Kit 2 pieces)

Art. nr. 5035270710015



Thermostatic head quotes



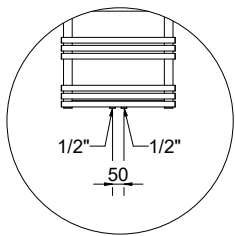
Kit 2 hooks polished stainless steel

Art. nr. 5991990010215

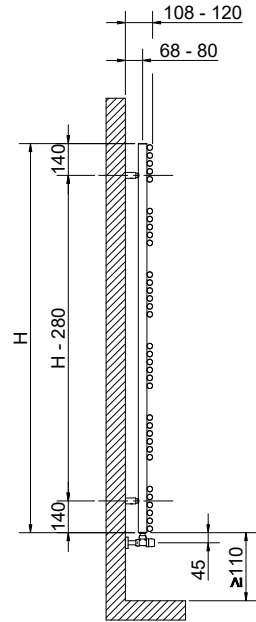
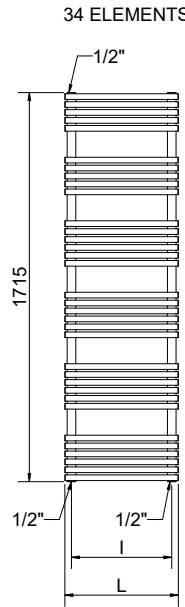
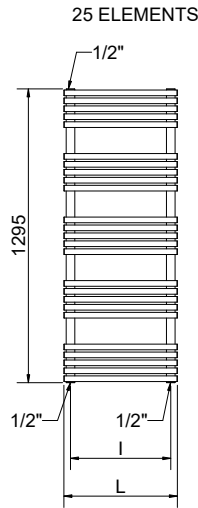
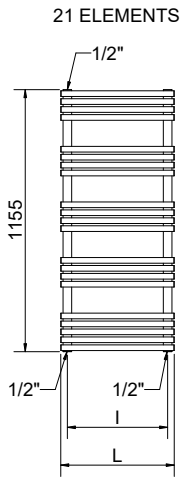
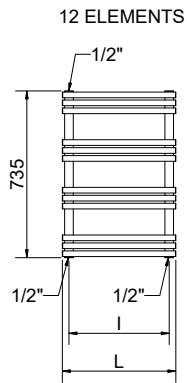
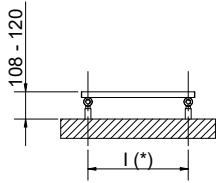


Pair of polished tube cover kit

Art. nr. 5103000000061



Detail of the pipe centres 50 mm version



(*) The fixing kit has the same pipe centre (l) as the radiator

Quotes for Kristal valves

SANDY POLISHED STAINLESS STEEL

| Height [mm] | Width L [mm] | Pipe centres l [mm] | Art. nr. | Pipe centres 50 mm | | Thermal output [Watt] | | | Dual energy kit [Watt] | | |
|-------------|--------------|---------------------|---------------|--------------------|-----------------|---------------------------|--------------------|---------|------------------------|---------|--------|
| | | | | Art. nr. | Dry Weight [Kg] | Surface [m ²] | Water content [lt] | Δt=50°C | | Δt=30°C | Exp. n |
| 735 | 400 | 342 | 3551440130250 | 3551440130270 | 5,8 | 0,55 | 3,3 | 217 | 117 | 1,2120 | - |
| | 500 | 442 | 3551440130254 | 3551440130274 | 6,7 | 0,64 | 3,8 | 256 | 139 | 1,2020 | - |
| 1155 | 400 | 342 | 3551440130251 | 3551440130271 | 9,7 | 0,93 | 5,6 | 340 | 181 | 1,2357 | 300 |
| | 500 | 442 | 3551440130255 | 3551440130275 | 11,2 | 1,10 | 6,4 | 408 | 219 | 1,2166 | 400 |
| | 600 | 542 | 3551440130258 | 3551440130278 | 12,7 | 1,26 | 7,3 | 476 | 257 | 1,2030 | 500 |
| 1295 | 800 | 742 | 3551440130261 | 3551440130281 | 15,6 | 1,59 | 9,0 | 612 | 334 | 1,1850 | 600 |
| | 400 | 342 | 3551440130252 | 3551440130272 | 11,3 | 1,09 | 6,5 | 396 | 210 | 1,2462 | 400 |
| | 500 | 442 | 3551440130256 | 3551440130276 | 13,1 | 1,29 | 7,5 | 475 | 254 | 1,2231 | 500 |
| | 600 | 542 | 3551440130259 | 3551440130279 | 14,9 | 1,49 | 8,5 | 555 | 300 | 1,2066 | 500 |
| 1715 | 800 | 742 | 3551440130262 | 3551440130282 | 18,4 | 1,88 | 10,5 | 715 | 390 | 1,1849 | 700 |
| | 400 | 342 | 3551440130253 | 3551440130273 | 15,2 | 1,47 | 8,7 | 528 | 276 | 1,2699 | 500 |
| | 500 | 442 | 3551440130257 | 3551440130277 | 17,7 | 1,75 | 10,1 | 630 | 335 | 1,2377 | 600 |
| | 600 | 542 | 3551440130260 | 3551440130280 | 20,1 | 2,01 | 11,5 | 733 | 394 | 1,2148 | 700 |
| | 800 | 742 | 3551440130263 | 3551440130283 | 24,8 | 2,54 | 14,2 | 939 | 513 | 1,1845 | 900 |

For output at different ΔT, please refer to the following formula: desired output = output at ΔT 50 x (desired Δt/50)ⁿ