

INSTALLATION AND FIXING



RAPID FIXING SAFETY KIT VDI 6036 COLOUR WHITE

These new fixing kit comply to **VDI 6036** norm regulating the safe anchoring of wall hung radiators. They guarantee a correct support in relation to the radiator Dry Weight and ensure stability and resistance to traction from every direction. This leads to maximum safety and easy installation.

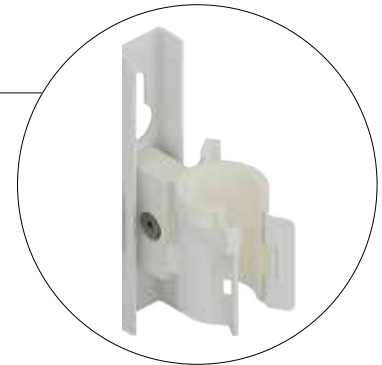
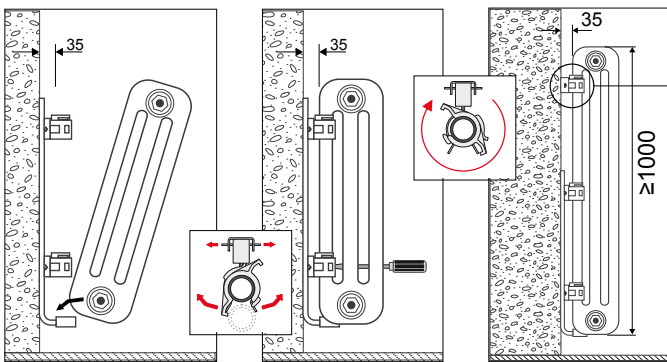
RAPID FIXING COLOUR WHITE (*)

Pair of fixing kit	Suitable for the following heights	Art. nr.	Max Load
	300 mm to 350 mm	5102000000440	150
	350 mm to 450 mm	5102000000441	
	500 mm to 700 mm	5102000000442	
	750 mm to 1000 mm	5102000000443	
	over 1000 mm (**)	5102000000444	

(*) The code nr of the chart refers to standard colour white R01 - RAL 9010; colours different from standard are supplied exclusively with the matching coloured radiator. Colour surcharge indicated in colour chart page 486.

(**) For Heights above 1000 mm the art. code includes an additional pair of fixing kit to be placed on the upper part of the radiator so to ensure complete stability as per below drawing.

EXAMPLE OF INSTALLATION WITH RAPID SAFETY KIT



UNIVERSAL RAPID SAFETY KIT

PAIR OF WALL TIES FIXING KIT COLOUR WHITE	Art. nr.	Max Load
	5991990310311	150

