

Window

DESIGN RADIATORS

Catalogue 2022



NEW

CORDIVARI
DESIGN

WINDOW

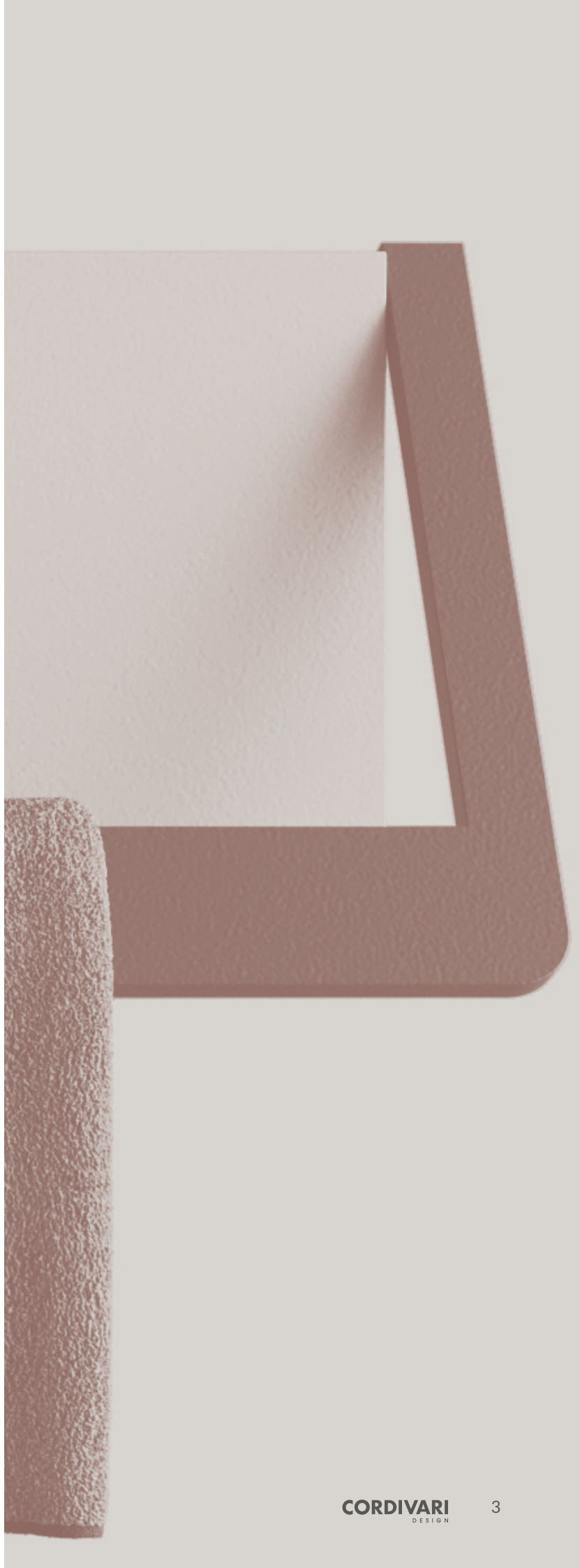
A new project of

CORDIVARI
DESIGN

Design by



Beatrice
DE SANCTIS



WINDOW

design by **Beatrice De Sanctis**



red dot winner 2022

Window is the new Cordivari Design radiator, born from the collaboration with the European University of Design of Pescara, very active in the creative sectors of Design, graphics and fashion. The partnership was born from the desire to promote the creativity and ideas of young designers, still free from any technical and artistic limitations.

BRAINSTORMING

Through brainstorming, an innovative approach to Design is prepared, without preventive censorship. Immediately after the brainstorming a critical analysis of ideas opens up, to define the concept on which it will be decided to work.



SKETCHES

The sketch phase is used to look for the form that best manages to respect the conceptual idea that emerged from the brainstorming. In this phase the designer has full expressive and formal liberty with the sole constrain of the concept to be respected.





IN THE PICTURE
L: 1100 mm - H: 495 mm
material: painted carbon steel
body colour: F30 White Sand
frame colour: F36 Terra
watt 519
technical data pag. 12

WINDOW

design by **Beatrice De Sanctis**



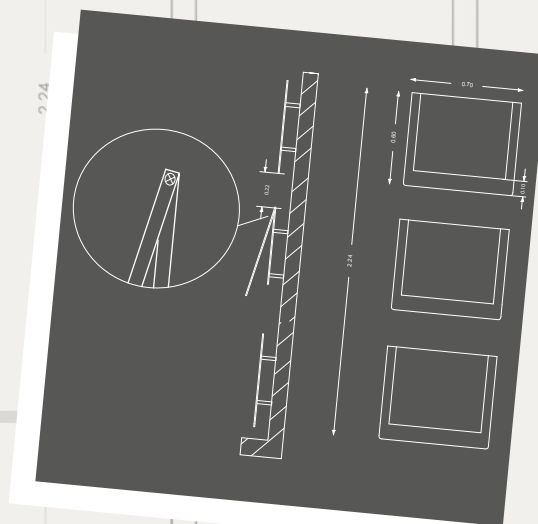
reddot winner 2022

The project has innovative features such as modularity, three-dimensionality, personalization and ergonomics that amplify the value of the product design.

Window is a radiator with strong contemporary notes, with simple and clean lines that are integrated in a modern and refined style. The frame, in addition to give a chromatic movement, adds a three-dimensional inspiration to the radiator, becoming a practical integrated towel holder. An accessory that can be opened and used as needed with a simple gesture. Made of colored steel, Window offers a wide range of customization and adaptability to any bathroom environments.

TECHNICAL DRAWINGS

Once formally defined, the sketch must be sized through the use of a standard technical language. In this phase, precision and detail of the technical drawing are required. This phase relates to the methods and to eventual production and industrialization constraints.





IN THE PICTURE
L: 1100 mm - H: 495 mm
material: painted carbon steel
colour: F04 Graphite Grey
watt 519
technical data pag. 12

WINDOW

design by **Beatrice De Sanctis**



reddot winner 2022



RENDERING

The rendering phase has multiple functions.

From the best definition of finishes and proportions with respect to a real setting up to uses for communication needs, rendering is a fundamental tool in the development of an innovative concept.





IN THE PICTURE
L: 550 mm - H: 495 mm
material: painted carbon steel
body colour: T20 White Grey
frame colour: T17 Acai Matt
watt 258
technical data pag. 12

WINDOW ELECTRIC

design by **Beatrice De Sanctis**



Remote-control for electric version

Modularity

Three-dimensionality

Customization

Ergonomics





reddot winner 2022

IN THE PICTURE

L: 1100 mm - H: 495 mm
material: painted carbon steel
body colour: T20 White Grey
frame colour: T17 Acai Matt
watt 454
technical data pag. 14



WINDOW

design **Beatrice De Sanctis**

MATERIAL:

Heating body and handle in ultra-thin painted carbon steel.

FIXING KIT:

Brackets, airvent, hexagonal tool, plugs and screws for mounting suitable for use on compact or hollow brick, installation notice.

The kit is certified from TÜV in compliance with VDI 6036-class 4.

FEATURES:

The exclusive design of the Window towel warmer combines aesthetics and functionality.

The heated handle can be extracted, acting as support for warming the towels. The opening and closing of the handle are manually operated. Window has been designed to offer maximum comfort of use by differentiating the temperature of the handle from that of the body.

The temperature of the handle is kept lower than that of the radiator body, so to allow a safe grip without sacrificing the maximum heat output provided by the radiator body at the normal operating temperatures of the heating system.

VALVE KIT INCLUDES:

Squared kit valve including chromed thermostatic head

Fittings for copper pipe (Ø 12/14/15)

Fittings for multilayer pipe (Ø 16 x2)

PACKAGING:

The radiator is protected with a film in polyethylene and cardboard box. Use and maintenance notice included.

PAINTING PROCESS:

Painted with ecological epoxy. (Certificate DIN 55900-1,-2). Thermal outputs certified in accredited laboratories in compliance with European norm EN442.

COLOURS:

Radiators and accessories: standard white R01 colour.

For other colours see page 16.

P. max: 5 bar

T. max: 110° C

Available for central heating systems

Connections: n° 2 x G 1/2" - n° 3 x G 1/8"

CERTIFICATES



AWARDS



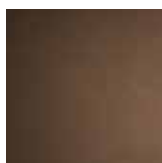
reddot winner 2022



BICOLOR

BODY

FRAME

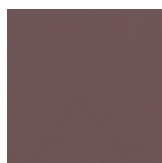
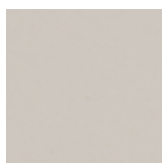


F30
WHITE SAND

F36
TERRA

BODY

FRAME



T20
WHITE GREY

T17
ACAI MATT

BODY

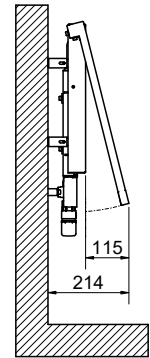
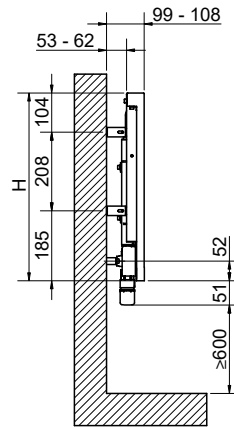
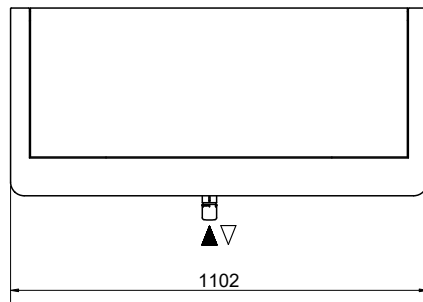
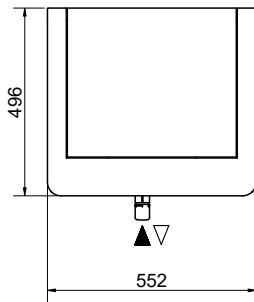
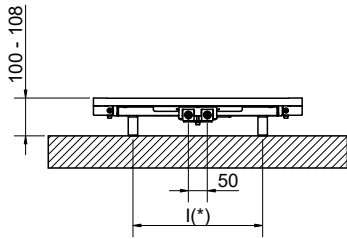
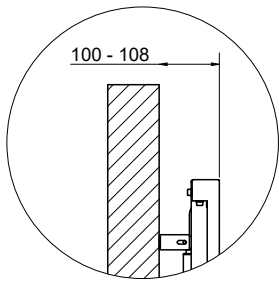
FRAME



F25
QUARTZ DUST

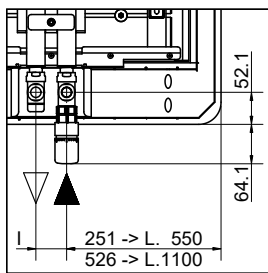
F23
SPARKLING GREY

Available color combinations.



Inlet flow must be set on the left connection, so to guarantee the correct functioning of the radiator.

Connection detail's on the REAR VIEW OF THE RADIATOR



WINDOW

Art. Nr.	Height		Width	Pipe Centres	Dry Weight	Surface	Water Content	Thermal output Watt		Exponent n
	H [mm]	L [mm]						$\Delta t = 50^{\circ}\text{C}$	$\Delta t = 30^{\circ}\text{C}$	
3551426102001	495	550	50	14,1	0,6	1,4	258	147	1,10347	
3551426102002		1100	50	22,4	1,15	2,6	519	285	1,17159	

Art. Nr. are referred to WHITE R01 colour version.

WINDOW BICOLOR

Art. Nr.	Colour		Height	Width	Pipe Centres	Dry Weight	Surface	Water Content	Thermal output Watt		Exp. n
	BODY	FRAME							H [mm]	L [mm]	
3551426102003	F30	F36	495	550	50	14,1	0,6	1,4	258	147	1,10347
3551426102006				1100	50	22,4	1,15	2,6	519	285	1,17159
3551426102004	T20	T17	495	550	50	14,1	0,6	1,4	258	147	1,10347
3551426102007				1100	50	22,4	1,15	2,6	519	285	1,17159
3551426102005	F25	F23	495	550	50	14,1	0,6	1,4	258	147	1,10347
3551426102008				1100	50	22,4	1,15	2,6	519	285	1,17159

For output at different Δt than 50°C , please refer to the following formula = desired output = output at $\Delta t 50^{\circ}\text{C} \times (\text{desired } \Delta t/50)^n$



WINDOW ELECTRIC

design **Beatrice De Sanctis**

MATERIAL:

Heating body and handle in ultra-thin painted carbon steel.

FIXING KIT:

Brackets, airvent, hexagonal tool, plugs and screws for mounting suitable for use on compact or hollow brick, installation notice.

The kit is certified from TÜV in compliance with VDI 6036-class 4.

FEATURES:

The exclusive design of the Window towel warmer combines aesthetics and functionality.

The heated handle can be extracted, acting as support for warming the towels. The opening and closing of the handle are manually operated. Window has been designed to offer maximum comfort of use by differentiating the temperature of the handle from that of the body.

The temperature of the handle is kept lower than that of the radiator body, so to allow a safe grip without sacrificing the maximum heat output provided by the radiator body at the normal operating temperatures of the heating system.

PACKAGING:

The radiator is protected with a film in polyethylene and cardboard box. Use and maintenance notice included.

PAINTING PROCESS:

Painted with ecological epoxy. (Certificate DIN 55900-1,-2). Thermal outputs certified in accredited laboratories in compliance with European norm EN442.

COLOURS:

Radiators and accessories: standard white R01 colour.

For other colours see page 16.

EUROPEAN WARRANTY

Electrical resistors: CLASS 2

Minimum class protection: IP 44

Seasonal energy efficiency η_s : $\geq 38\%$

Control: Power unit + Digital chrono thermostat in radio frequency

Cable length:

- With EU schuko socket: 1000 mm

CERTIFICATES



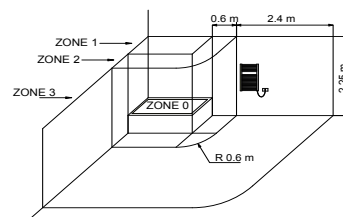
AWARDS



HOW TO PLACE ELECTRIC RADIATORS

The national rules on installing electrical equipment in the bathroom must be scrupulously respected. The electric radiators must be always installed outside zone 1 and 2.

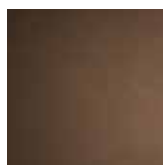
In particular the electric switch and control elements must be mandatorily located in zone 3, in order that no electrical control center is accessible to anyone using the shower or bath.



BICOLOR

BODY

FRAME

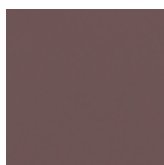
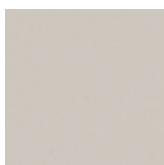


F30
WHITE SAND

F36
TERRA

BODY

FRAME

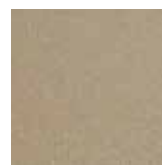


T20
WHITE GREY

T17
ACAI MATT

BODY

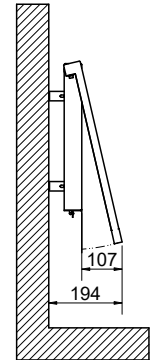
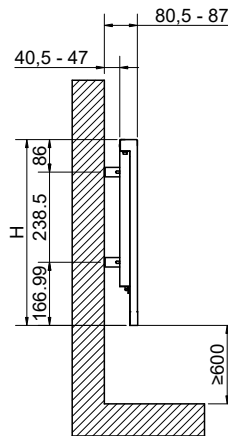
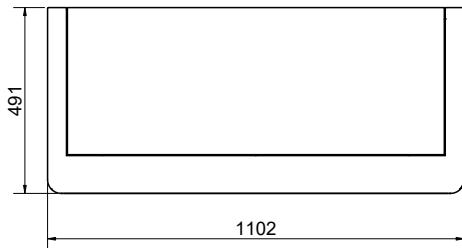
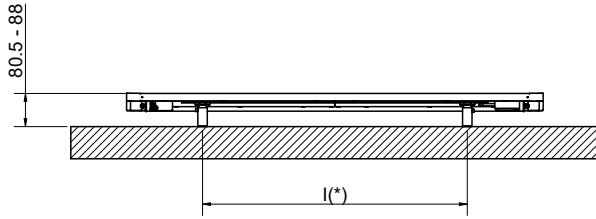
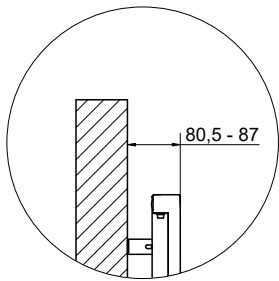
FRAME



F25
QUARTZ DUST

F23
SPARKLING GREY

Available color combinations.



WINDOW ELECTRIC

Art. Nr.	Height		Width	Thermal output	Weight
	H [mm]	L [mm]	Watt	Kg	
DIGITAL CHRONOTHERMOSTAT KIT IN RADIOFREQUENCY SCHUKO PLUG 230V 50HZ CLASS 2					
3581420002002	495	1100	454	18	

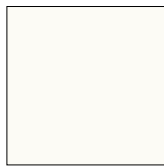
Art. Nr. are referred to WHITE R01 colour version.

WINDOW BICOLOR ELECTRIC

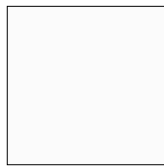
Art. Nr.	Colour		Height	Width	Thermal output	Weight
	BODY	FRAME	H [mm]	L [mm]	Watt	Kg
DIGITAL CHRONOTHERMOSTAT KIT IN RADIOFREQUENCY SCHUKO PLUG 230V 50HZ CLASS 2						
3581420002004	F30	F36	495	1100	454	18
3581420002005	T20	T17				
3581420002006	F25	F23				

COLOURS

STANDARD



RAL 9010 - R01
BIANCO
PURE WHITE



RAL 9016 - R02
BIANCO TRAFFICO
TRAFFIC WHITE

CLASSIC



RAL 9001 - R14
CREMA
CREAM



S20
JASMINE



S03
PERGAMON



S16
CANARY



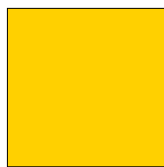
RAL 1013 - R40
PEARL WHITE



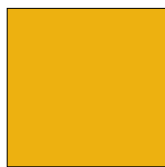
S10
ANEMONE



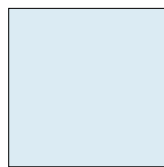
S21
PALE YELLOW



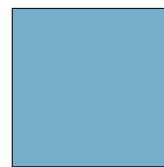
RAL 1021 - R05
GIALLO ACCESO
YELLOW RAPE



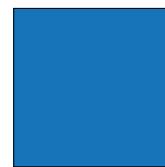
RAL 1004 - R06
GIALLO ORO
GOLD



H04
GHIACCIO
ICE



H09
LAGO
LAKE



RAL 5015 - R11
BLU CIELO
BLUE SKY



RAL 5017 - R18
BLU OLTREMARE
OVERSEAS BLUE



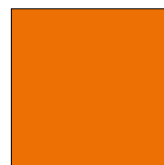
RAL 5022 - R19
BLU NOTTE
BLUE NIGHT



RAL 9005 - R13
NERO
JET BLACK



H24
MANGO



H25
MANDARINO
TANGERINE



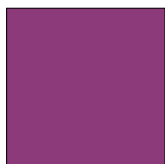
RAL 2004 - R16
ARANCIO
PURE ORANGE



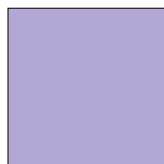
H27
ROSSO VIVO
BRIGHT RED



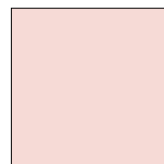
RAL 3003 - R08
ROSSO RUBINO
RUBY RED



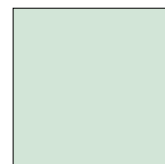
RAL 4008 - R25
VIOLA
PURPLE



H53
LILLA ACCESO
BRIGHT LILAC



S13
ROSA SUSSURRATO
LIGHT PINK



RAL 6019 - R26
WEISSGRÜN
LIGHT GREEN



H30
MELA VERDE
GREEN APPLE



RAL 6002 - R20
VERDE FOGLIA
GREEN LEAF



RAL 8017 - R09
TESTA DI MORO
DARK BROWN



S17
BAHAMA BEIGE



H48
TORTORA
DOVE



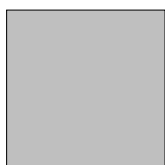
H56
PIETRA LAVICA
LAVIC STONE



S07
GRAFITE
GRAPHITE



RAL 7030 - R22
GRIGIO PIETRA
STONE GREY



S02
MANHATTAN



RAL 7001 - R21
GRIGIO ARGENTO
SILVER GREY



R27
GRIGIO METALLIZZATO
METAL GREY



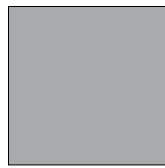
F41
AMBER GOLD

For the exact consultation of the colors, refer to the Cordivari Design color chart.

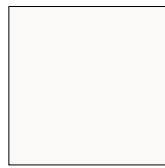
MATT



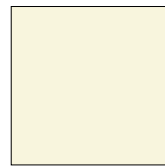
T01
NERO OPACO
MATT BLACK



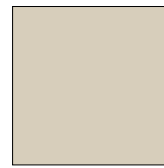
T12
GRIGIO CHIARO OPACO
MATT LIGHT GREY



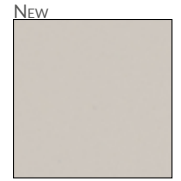
T11
MATT WHITE
MATT WHITE



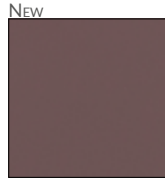
T10
BEIGE OPACO
MATT BEIGE



T15
TELA OPACO
TELA



T20
WHITE GREY



T17
ACAI MATT



T19
BRITISH GREY

TEXTURE



F20
MILKY



F22
ORO CLASSICO
CLASSIC GOLD



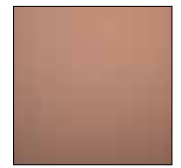
F36
TERRA



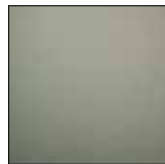
F31
CORTEN BROWN



F34
RED SAND



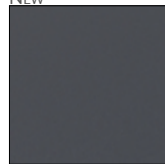
F38
SANDSTONE



F33
EMERALD SAND



F37
DENIM BLUE

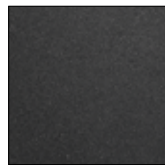


F43
GREY ANTRACITE



T18
PLUM

SPECIAL FINISHING



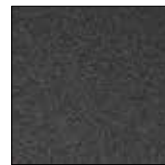
F24
BLACK STAR



F06
NERO RUVIDO METALLIZZATO
METAL ROUGH BLACK



F15
NERO BRILLANTE METALLIZZATO
METAL SPARKLING BLACK



F04
GRIGIO GRAFITE
GRAPHITE GREY



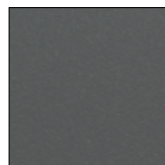
F14
EFFETTO BRONZO ANTICO
OLD BRONZE EFFECT



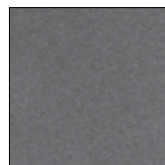
F09
GRIGIO ALBA METALLIZZATO
GRAPHITE LIGHT GREY



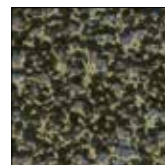
F07
EFFETTO ARGENTO
SILVER EFFECT



F27
MOONSHINE



F26
DARK ALUMINIUM



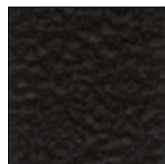
M01
GOLD BLACK



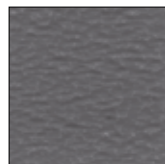
M04
BLACK SILVER 2



M06
GOLD WHITE



W02
CARBONE
CARBON



W03
DOLOMITE



F23
SPARKLING GREY



F25
QUARTZ DUST



F30
WHITE SAND



F32
GREY SKY



F35
FOREST GREEN



F39
BALMORAL GREY



F44
CLAY



F40
GOLDEN PEACH



F42
LIGHT CORAL

GENERAL SALES AND WARRANTY CONDITIONS

Sales of Cordivari's products are made according to the conditions listed below. Exceptions should be accorded in written by Cordivari Srl.

1. SHIPMENT

Goods are transported at buyer's risk and peril. Goods must be inspected at the moment of the delivery, in the presence of the carrier. The Buyer is required to check the integrity of the packaging, and if there might be missing or confused products. Any claim has to be immediately communicated to the carrier, signing the shipment's document with reservation of inspection. Following, the Buyer shall send formal signalation to Cordivari Srl via registered email. Any signalation shall be sent within maximum 8 days from receipt of the goods. In absence of the aforementioned conditions, Cordivari Srl is cleared of any liability.

2. DELIVERY TERMS

Delivery terms are indicative. Failure to comply with the agreed delivery terms for any reasons will not entitle the buyer to any compensation, cancellation or modification of the order without Cordivari Srl prior consent. In case of strikes, lack in raw materials, or any other Act of God, Cordivari Srl reserves the right to decide proper countermeasures; in this case Cordivari Srl should be considered exempted from any responsibility. Shall ordered goods not be collected within agreed date, the same will be invoiced and stored with risks and costs charged to the customer.

3. DRY WEIGHT, MEASURES, SURFACES

Dry Weights, measures, surfaces, shapes, sizes, images and other figures related to the products are merely indicative and Cordivari Srl may at any time modify them.

4. ORDER CANCELLATION OR MODIFICATION

All orders are valid only if accepted in written form by Cordivari Srl. No orders shall be cancelled even partially without the consent of Cordivari Srl. It will not be possible to modify the order when the production has already started. Any cost due to the modifications or cancellation will be of buyers charge.

5. RADIATORS/ACCESSORIES WARRANTY ON CONSTRUCTION DEFECTS

Cordivari Srl guarantees 10 years for all stainless steel radiators in the hot water version. For all radiators with circuits other than stainless steel, Cordivari Srl guarantees 5 years in the hot water version. For all electrical products, accessories and all residual items not contemplated in the conditions of sale, Cordivari Srl guarantees within the terms and for the period of time established by Directive 1999/44 / EC on certain aspects of the sale of consumer goods and associated guarantees.

- The warranty period starts with the date of the delivery of the material by Cordivari and this warranty is invalidated if the code of the radiator with the date is removed or modified.
- Warranty is only valid if Cordivari S.r.l. is notified by registered mail about the fault within 8 days from delivery.
- Warranty will take effect after having examined the defects and their causes in the Cordivari plant.
- The materials that have to be replaced or repaired must be shipped free of charge to the Cordivari plant.

Warranty will be applicable at the following conditions:

- materials must have been stored in good conditions and protected from the inclemency of the weather before installation;
 - radiator did not have damages during transport, handling or installation;
 - no alterations or reparations must be done without the prior consent of the seller;
 - the buyer must have paid all the bills within the pre-established deadlines;
 - if for cleaning none of those aggressive, corrosive, substances not suitable for radiators material have been used;
 - the installation must have been done by professionals and in conformity with all instructions standards written on the technical data sheets provided by Cordivari S.r.l.;
 - no periodical emptying or charging of the system must have taken place;
 - no aggressive chemical substances must have been added to the water of the system
 - the working pressure and temperature shown in the catalogue must correspond to the current usage pressure and temperature;
 - the caps and Accessories used must be original Cordivari materials;
 - radiator has not been connected to a system with open expansion tank;
 - the radiators must not have been connected to the sanitary water system;
- The warranty doesn't cover construction or dismantling costs to move the product from/to the installation place.

In case of using antifreeze, it should never be used pure, but it has to be diluted before including in the heating system.

In case of using anti-corrosion, it has to be compatible with all the material composing the heating elements of the radiator.

In case of preinstalled Cordivari's caps, each alteration of those caps will void the warranty of the product. Cordivari will not assume responsibilities for radiator assembled by other people and/even for caps which are not by Cordivari. Cordivari's warranty immediately cease in case of reparations or modifications on products without the previous agreement of Cordivari.

Heating system should be without any remaining of metals, calamine, grease, and without presence of gaz.

Before starting the heating system, make a rinse to clean any residual from the installation/working.

Warranty will not be valid in case of damages caused by electrical system.

The purchaser may not claim any other cost of direct or indirect damage to person or properties resulting from above confirmed defects.

6. PAYMENTS

All invoices have to be paid according to the agreed deadline. Any delay, even partial may suspend the planned deliveries. Overdue interest could be charged at current rates.

7. GOODS' PROPERTY

Cordivari Srl remains owner of the delivered goods until they are not completely paid. In case of failure to proceed to the payment, Cordivari Srl could ask for immediate restitution of goods and keep the paid partial amount as indemnity. Cordivari Srl can reserve the right to evaluate bigger damages caused by the outstanding amount.

8. PRICES

Prices are not binding and can be modified without communication and can be modified on basis of the modifications which could appear before and during delivery. Prices are intended on FCA-MORRO D'ORO Incoterm 2010 basis, except in case of written agreements. For some voluminous delivery Cordivari may charge some extra-costs. All prices indicated are V.A.T. excluded.

9. ORDERS/DELIVERY

The Order value is minimum EURO 2.000,00. Given orders are binding to the buyer, who acknowledges of all our sales conditions.

Delivery is intended to customer warehouse; for any different destination please ask to our sales dept.

10. COURT AUTHORITY

For the following Catalogue and conditions only the provisions of Italian law will be used. For controversy, the Court of Teramo (Italy) shall have exclusive competence. Essential and trial law shall be exclusively Italian.

11. ORIGINAL VERSION

Being a translation, the Italian language is the only valid language for interpretation and conditions of this catalogue version.

© Copyright Cordivari Srl

All rights such as reproduction, diffusion and translation are reserved. No part of this brochure can be reprinted or reproduced in any other form without a written authorization by Cordivari Srl. The present catalogue substitutes and invalidates all previous editions. Cordivari reserves the right to modify in every moment products and figures reported in the catalogue and has no responsibility for any press mistake.

CONDIZIONI DI VENDITA E GARANZIA

La vendita dei prodotti viene effettuata conformemente alle sotto elencate Condizioni Generali di Vendita e Garanzia. Ogni deroga è subordinata all'accettazione scritta da parte della Cordivari Srl.

1. SPEDIZIONE

La merce viaggia a rischio e pericolo del Committente, anche se viene spedita franco destino. La merce deve essere verificata all'atto della consegna, controllando l'integrità dell'imballo, articoli mancanti o sostituzioni in presenza del trasportatore. Ogni contestazione dovrà essere segnalata immediatamente al trasportatore/carriere firmando con riserva il DDT e confermando tale riserva a mezzo lettera raccomandata o posta certificata entro otto giorni dal ricevimento della merce.

2. TERMINI DI CONSEGNA

I termini di consegna si intendono approssimativi e comunque se il termine di consegna non potesse essere rispettato per qualsiasi motivo, il Committente non avrà diritto a esigere alcun indennizzo, pagamenti di penali, annullamento o modifica all'ordine conferitoci. In caso di eventi straordinari quali calamità naturali, scioperi, mancanza di materie prime, e cause di forza maggiore, la Cordivari Srl si riserva la scelta delle misure da adottare. Se la merce ordinata non viene ritirata nel periodo concordato, questa verrà fatturata e immagazzinata con costi, rischio e pericolo a carico del committente.

3. PESI, MISURE, SUPERFICI

Pesi, misure, superfici, forme, dimensioni, immagini e altri dati sono indicativi e non impegnativi e possono subire delle modifiche o variazioni che la Cordivari Srl si riserva di apportare ai suoi prodotti senza preavviso.

4. ANNULLAMENTO O MODIFICA ORDINE

Senza il consenso scritto della Cordivari Srl, le ordinazioni conferite non possono essere né parzialmente né totalmente annullate o modificate. Non si accordano variazioni o modifiche quando sia già stata intrapresa la lavorazione. Eventuali spese derivanti dall'annullamento o modifica dell'ordine saranno fatturate al Committente.

5. GARANZIA RADIATORI/ACCESSORI

Per tutti i radiatori d'arredo in acciaio inox nella versione acqua calda la Cordivari Srl garantisce 10 anni. Per tutti i radiatori con il circuito diverso dall'acciaio inox, sempre nella versione acqua calda la Cordivari Srl garantisce 5 anni. Per i tutti i prodotti electric, gli accessori e per tutti gli articoli residuali non contemplati nelle condizioni di vendita la Cordivari Srl garantisce nei termini e per il periodo di tempo stabilito dalla legge nazionale di recepimento della Direttiva Garanzie 1999/44/CE.

- La garanzia decorre dalla data di consegna da parte della Cordivari e decade se viene manomessa e/o rimossa l'indicazione del lotto di produzione.
- I prodotti diventati inutilizzabili per difetti di costruzione saranno riparati o sostituiti gratuitamente franco Vs. destinazione.
- La condizione essenziale affinché la garanzia sia valida è che i difetti riscontrati siano notificati entro 8 (otto) giorni dal ricevimento della merce, per iscritto tramite raccomandata A/R o posta certificata.
- La garanzia sarà operante previo esame dei difetti e delle loro cause presso la sede della Cordivari Srl.
- Il materiale da sostituire o riparare dovrà essere consegnato franco magazzino presso la Cordivari Srl. L'impegno di prestare la garanzia sussiste a condizione che:
- Il materiale sia stato immagazzinato in buone condizioni e al riparo dalle intemperie prima di essere installato;
- Il radiatore non abbia subito danneggiamenti durante il trasporto, le movimentazioni o l'installazione;
- Non siano state effettuate manomissioni o riparazioni dei prodotti senza l'autorizzazione della Cordivari Srl;
- Il compratore abbia effettuato il saldo dei pagamenti nei termini prestabiliti;
- L'installazione sia stata realizzata da personale qualificato e in conformità alle istruzioni e alle norme indicate sulla documentazione tecnica fornita dalla Cordivari Srl;
- Per la pulizia del radiatore non siano stati utilizzati detergenti aggressivi, abrasivi incompatibile con il materiale del corpo scaldante.
- Non siano stati effettuati svuotamenti o caricamenti periodici dell'impianto;
- Non siano state effettuate aggiunte di sostanze chimiche aggressive all'acqua dell'impianto, e siano stati rispettati i valori guida secondo la normativa UNI 8065 con opportuni trattamenti dell'acqua;
- La pressione e la temperatura di esercizio indicate sul catalogo corrispondano alla pressione e alla temperatura massima di esercizio;
- Il circuito sia esente da residui di metallo, calamina, grasso e non ci sia presenza di gas. Prima della messa in funzione dell'impianto, eseguire un lavaggio per eliminare residui di lavorazione meccanica e/o residui in fase d'installazione.
- I tappi e gli accessori utilizzati siano quelli regolarmente forniti dalla Cordivari srl;
- I radiatori non siano collegati all'impianto dell'acqua calda sanitaria.
- I radiatori non siano collegati ad impianti con vaso di espansione aperto.

Nel caso in cui si utilizzi l'antigelo, esso non dovrà mai essere utilizzato puro, ma diluito prima di essere introdotto nel circuito.

Nel caso in cui si utilizzi un inibitore di corrosione, esso dovrà essere compatibile con tutti i materiali presenti nei corpi scaldanti.

In caso di prodotto con tappi premontati dalla Cordivari Srl, qualsiasi manomissione degli stessi, porterà fuori garanzia il prodotto. La Cordivari Srl non si assumerà comunque responsabilità su batterie assemblate da terzi, e/o con tappi e riduzioni assemblati da terzi. Qualora il Cliente esegua modifiche o variazioni di sua iniziativa sui materiali in contestazione senza il nostro preventivo benegere, decade immediatamente ogni responsabilità della Cordivari Srl.

La garanzia inoltre non opera in caso di anomalie o guasti dipendenti dalla rete d'alimentazione elettrica. La garanzia non copre costi dovuti a demolizioni, opere murarie, lavori per il passaggio e la collocazione dei prodotti sia in ingresso che in uscita e la manodopera per eventuali sostituzioni di prodotto.

Cordivari Srl si impegna durante il periodo di garanzia alla sostituzione del prodotto reso e riconosciuto difettoso per accertati difetti di produzione, oltre a ciò il Committente non potrà vantare alcun altro risarcimento per spese di danno, dirette o indirette di qualsiasi natura a persone e/o a cose derivanti da detti difetti.

6. PAGAMENTI

I pagamenti delle fatture relative alle forniture dovranno essere effettuati entro i termini di scadenza stabiliti. Il ritardo nel pagamento delle fatture, anche se parziale, dà luogo alla decorrenza degli interessi di mora nella misura del tasso corrente, oltre alla sospensione immediata delle spedizioni in corso e del processingamento di eventuali ordini.

7. RISERVA DI PROPRIETÀ

I prodotti restano di proprietà della Cordivari Srl fino al pagamento dell'ultima rata di prezzo di merce consegnata. In caso di inadempimento anche parziale del compratore la Cordivari Srl potrà chiedere l'immediata restituzione della merce trattenendo comunque le rate pagate a titolo di indennità salvo il maggior danno.

8. PREZZI

I prezzi non sono impegnativi e possono essere modificati senza preavviso.

I prezzi sono revisionabili in funzione delle variazioni che dovessero intervenire fino al momento della consegna. I prezzi si intendono resa franco stabilimento di Morro D'Oro (TE), salvo diversi accordi. I prezzi sono sempre riportati nel listino al netto di IVA. Per modelli ingombranti la Cordivari Srl si riserva di chiedere una partecipazione alle spese di imballaggio.

9. ORDINI/CONSEGNA

Il valore minimo per ordine è di Euro 2.000. Gli ordini impartiti impegnano definitivamente il Committente che deve dichiarare di conoscere e accettare tutte le condizioni di vendita.

La consegna si intende esclusivamente presso la sede/magazzino del Committente. Richieste particolari del Committente avranno costi addizionali che verranno comunicati di volta in volta dal nostro ufficio commerciale.

10. FORO COMPETENTE

Per qualsiasi controversia derivante dal presente contratto o collegata allo stesso è competente il Foro di Teramo.

© Copyright Cordivari Srl

Tutti i diritti, in particolare quelli di riproduzione, diffusione e traduzione sono riservati. Nessuna parte di questa opera può essere ristampata o riprodotta in qualsiasi altra forma senza l'autorizzazione scritta della Cordivari. Il presente catalogo sostituisce ed annulla tutte le edizioni precedenti. La società si riserva la facoltà di modificare in qualsiasi momento i prodotti e i dati riportati a catalogo e non risponde degli eventuali errori tipografici. Le schede prodotto e i cataloghi riportati sul sito web aziendale sono sempre aggiornate all'ultima versione.

CORDIVARI

DESIGN



CORDIVARI SRL

Z. I. Pagliare 64020 Morro D'Oro (TE) • Italy
C.F. / P.Iva e Reg. Imp. TE 00735570673
Capitale Sociale Euro 4.000.000,00 i.v
Tel: +39 085 80.40.1 | Fax: +39 085 80.41.418
export@cordivari.it | www.cordivaridesign.com

